



**Luce** sul Mare   
ONLUS

Accredited Private Center of Rehabilitation



**A Guide to our Services**



Azienda con Certificazione di Qualità  
UNI EN ISO 9001:2008



# **A Guide to our Services**

(regulations and standards)

Companionship “Luce sul Mare”  
Social Coop Society a.r.l. Onlus

Accredited Private Center of Rehabilitation

**Cooperativa Luce sul Mare Soc. Coop Sociale a r.l. Onlus**

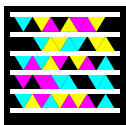
Address: Viale Pinzon 312/314 - 47814 Bellaria-Igea Marina (RN)

Phone. 0541.338711 - Fax 0541.331868

e-mail: [amministrazione.lsm@lucsulmare.it](mailto:amministrazione.lsm@lucsulmare.it)

web-site: [www.lucsulmare.it](http://www.lucsulmare.it)

 Luce sul Mare Onlus



## OUR STORY BEGINS MANY YEARS AGO...

The origins of the Companionship “Luce sul Mare” (lit. Light by the sea) goes back to the 1980, when the old domain of the private institute for assistance and rehabilitation of psychophysically handicapped decided to close its activity, due to economic reasons. In front of such a drastic choice, a part of dependents and collaborators not willing to abandon the taken path, between thousands of difficulties, decided to form a cooperative society to keep on doing the job in which all of them believed. So that’s how Luce sul Mare was born, in the municipality of Bellaria Igea Marina. A structure whose main object was (and still is) to match together the guarantee of clinic, rehabilitative and social results and a special attention to the patient through dialogue and continuous compare in order to offer a service in constant evolution. Nowadays, thanks to our work, to the profuse involvement and the demonstrated professionalism, we have reached great results in terms of both presence of patients and staff, mostly living on our territory, who made of the “Luce sul mare - Center of rehabilitation” a unique case in the National range. The companionship has given and keeps on giving answers to the questions of the A.S.L. commissioners and privates innovating its services and introducing new rehabilitative techniques, always maintaining its particular structure of O.N.L.U.S.



## MISSION

Luce sul Mare is a companionship whose main task is:

- concurring to the growth in quality and quantity of what concerns services of rehabilitation oriented to disabled people, available at both local and national level, chasing the general interests of the community.
- offering to the affiliates and dependents a stable job to favourish the professional increasement, the social participation and the quality of the relationships.
- propose itself as a company of distinction through the various and numerous services offered, constantly updated with innovations and well organized.
- confirm and update the values at the head of our development: the human and professional approach to the patients, the presence on the territory, the ability of answering operatively to the rehabilitation needs of the community.

## BASIC PRINCIPLES

Our Services are distributed followinf these principles:

**EQUITY:** with no distinction of sex, race, language, religion, and political ideas.

**IMPARTIALITY:** through criteria of objectiveness and justice.

**CONTINUITY:** the rehabilitation project is given regular and constantly, with no interruptions

**RIGHT OF CHOICE:** the costumer has guaranteed the possibility of choosing the subject giving the service.

**PARTECIPATION:** the center assures the participation of the customer and its family to the services in these terms: the activation of a functioning system of information about the service and the access to it; authorization of proper spaces for the family reunions, during the which It would be possible to get info on the liking of performances and the given services.

**QUALITY:** the center is constantly envolved on giving proper services, applicable to the real needs of the patient.

## TRAINING AND PROFESSIONAL UPDATING

The center of rehabilitation Luce sul Mare organize classes of training and professional updating, with the purpose of assuring high quality services.

## LINKS WITH UNIVERSITY

Luce sul Mare is seat of apprenticeship for degree in psychology, physiotherapy, nursing from the university of Bologna, and Sport Science and Education Science, from both Bologna and Urbino universities.

## FIDER

Luce sul Mare is associate to F.I.D.E.R., Italian Foundation for Disability and Rehabilitation onlus, seating in viale Pinzon 312/314 - 47814 Bellaria-Igea Marina (RN). The intent of F.I.D.E.R. is the scientific research in the ambit of disability rehabilitation. For scientific research we mean all activities regularized by the DPR n.135 of the 20 March 2003, including all acts encouraging the add-in of disadvantaged subjects, not only the medical activities.

## OPERATIVE UNITS AND SERVICES

**Central seat of Bellaria- Igea Marina :**

**O.U. Department “Ridente” - U.O. physical disabilities**

V.le Pinzon, 312/314 - 47814 Bellaria-Igea Marina (RN)

**O.U. “psychophysical disabilities”**

V.le Pinzon, 312/314 - 47814 Bellaria-Igea Marina (RN)

**O. U. Pavilion “Vighi”**

V.le Pinzon, 247 - 47814 Bellaria-Igea Marina (RN)

**O. U. Pavilion “Q. Sirotti”**

V.le Pinzon, 249 - 47814 Bellaria-Igea Marina (RN)

**Group Practice and Outpatient’s rehabilitation Center “Igea Marina”**

V.le Pinzon, 312/314 - 47814 Bellaria-Igea Marina (RN)

**Domiciliary Rehabilitation Activity**

V.le Pinzon, 312/314 - 47814 Bellaria-Igea Marina (RN)

**Center of Mobility FIAT AUTONOMY**

**“Luce sul Mare” – for driver licence**

V.le Pinzon, 312/314 - 47814 Bellaria-Igea Marina (RN)

**Accredited F.I.S.E. center of Horse Rehabilitation therapy Igea Marina**

V.le Pinzon, 312/314 - 47814 Bellaria-Igea Marina (RN)

**Detached Seats: O. U. Ward of**

**Neurorehabilitation and Intensive**

**Rehabilitation, by the civil hospital “A. Franchini”**

Via Pedrignone, 3 - 47822 Santarcangelo di Romagna (RN)

**Group Practice and Outpatient’s rehabilitation Center “Malatesta”**

Via di Duccio, 8 - 47921 Rimini

## HOW TO REACH US

**The central Seat of Bellaria Igea Marina** is reachable passing through the highway A14 till the tollhouse of Rimini nord. You can drive towards Torre Pedrera (RN) and continue till the cross between “la Litoranea” and “Via Tolémaide”. When you reach the sea you have to turn on your left towards Igea Marina and continue for 1 Km. If you come by train the nearest station is “RIMINI” from which a bus (ask for “linea4”) can bring you to Igea Marina and stop in front of the Center of rehabilitation.

**The O.U. (repart of neuro and intensive rehabilitation) located in Santarcangelo di Romagna (RN)** in the civil hospital “A.Franchini” on the second floor of Via Pedrignone n°3. You can get there through the highway A14 till the tollhouse of Rimini nord. Follow the indications for Santarcangelo di Romagna and after the roundabout at the beginning of the city take the turn on your left for Via Pedrignone, where is located the civil hospital “A. Franchini”. For those who come by train, the autobus of the “linea 9” start from the station of Rimini.

**The Group Practice “Malatesta”** is located in the old town center of Rimini, near the “Malatestiano” castle, in Via A. di Duccio, 8 (parking of Piazza Malatesta). For those who come by train you can get an autobus from the Station of Rimini (ask for the linea 90) or you can get there by foot in about 10 minutes.

## CONTACTS

**Central seat:**

**Viale Pinzon 312/314 - 47814 Bellaria Igea Marina (RN)**

**Call Center: Tel 0541 338711 - Fax 0541 331868 - E-mail centralino.lsm@lucsulmare.it**

**Office for public relations (U.R.P.):**

**Phone 0541 338708 - Fax 0541 331868**

**E-mail info.lsm@lucsulmare.it – web site: www.lucsulmare.it**

# O.U. WARD “RIDENTE”

Rehabilitation Ex Art. 26 L. 833/78

Acute Aquired Disability DGR 2068

Elderly long stay Extensive Rehabilitation



## TYPE OF SERVICE

Available 28 beds dedicated to the housing of patients with the following types of asylum:

- longstay for acute disability acquired in mature age; D.G.R. 2068/2004 e D.G.R. 840/2008;
- asylum for Elderly long stay Extensive Rehabilitation (cod.60)
- long rehabilitative stay referring to the ex art. 26 L. 833/78.

## FINALITY OF THE SERVICE

The addressee of the DGR 2068/2004 are people in situation of acute handicap with disability resultants of brain damage, spinal cord injury and evolutive neurological pathologies. Our task is to assure proper assistance to the needs of the patient and its family through:

- personalization of the answers;
- integrated and global approach;
- constant attention;
- respect for the will and choices of the person;
- adhesion for the families.

The wing for the asylum for Elderly long stay/Extensive Rehabilitation (cod 60) guarantees interventions for patients who necessitate, after the acute phase, to complete the rehabilitative journey began in the hospital. The asylums (for the art. 26 L. 833/78) is applied to all patient with civil disability who need rehabilitation to re-acquire or maintain residue abilities. The object of the operative unit is to satisfy exigencies of the patients related to the typologies of the asylum. In collaboration with the ASL of provenience.

## OFFERED SERVICES

- - 24 hours Medical assistance: the assigned internal doctor is present every morning from Monday to Saturday from 8:00 am to 2.00 pm and guarantees the estimation, the clinical monitoring and the medical intervention. The remaining hours (afternoon, night, holiday) are guaranteed by the Guard doctor of the structure. The specialist physiatrist is responsible for the formulation of the individual rehabilitative project which involves (over the recovery from the disability) also the family of the patient, aiming to reinserting the subject in its everyday life.
- - 24 hours Nursing assistance: the nursing staff gives nursing rehabilitative interventions and training of the caregivers, paying close attention to the bed sores.
- - Neuro and motor Re-education: related to the neuromuscular activation, the prevention of tertiary damage and the improving of respiration.
- - occupational theory: the treatment is finalized to the recovery of the possible maximum autonomy, and above all to the training of the family (or care-giver) for the cure of the assisted. It contemplates an estimation with prescription of the aids and the devices necessary to the patient.
- - Neuropsychology and speech-language pathology: the service occupies of the estimation and treatment of the disturbs of the cognitive functions and of the behavior, language and deglutition.
- - Clinic psychology: the service is oriented to the psychological advocacy of the patient and its family, you can have access to it for free and directly through advice and both individual or familial take in responsibility.
- - Social Assistance: the social assistance can be useful for facing problems involving the demission. Activating the territorial services to guarantee continuity in care and assistance. The service provide info on how to forward demand of invalidity and on the social-secure procedures.
- - Asylum office: Over the programming of the asylums, the service provides indication on how sending demand of civil invalidity, requests of services for the income, demand for the nominee of the adhesion administrator, release of long-stay certifications, requests of medical reports and copy of the clinical case history.

## QUALITY FINALITIES OF THE SERVICE

- guarantee a continuous improving of the activities, also through the certification as for the international normative UNI EN ISO 9001:2008;
- encourage proper recoveries for the kind of treatment (pertinence)
- guarantee promptness in the acceptance of the asylum demands.
- increase the client's satisfaction.
- improve the internal and external communication;
- increase the personal competence;
- improve the monitoring of the performances for what concerns the sanitary and charitable processes (also through the utilization of estimation scales).
- prevent bed sores.

## INTERDISCIPLINARY STAFF

Specialist Psychiatrist Doctor

Internist Doctor

Nurse

Nursing Service coordinator

Rehabilitation techniques coordinator

Social sanitary operator

Physiotherapist

Occupational Therapist

Speech Therapist

Speech- language pathologist

Neuropsychologist

Psychomotor educator

Social Assistance

## PERSONAL AND SCIENTIFIC COLLABORATIONS

- Cardiologic Evaluation
- Lung Evaluation
- Optometric evaluation
- Phoniatic evaluation
- Gastroenterological Evaluation
- Neurologic Evaluation

## HOW BEGINS THE ASYLUM

The access to the Ward is offered through programmed asylum proposed by the hospital doctor, SSN prescription, General Medicine Doctor, public specialist, attaching a clinic/ psychiatric report which will be evaluated by the responsible Doctor for the insertion in the wait list. The contacts for programming the access must be taken with the "asylum office" phone. 0541-338724 ; fax 0541-331868; mail: [ricoveri.ig@lucsulmare.it](mailto:ricoveri.ig@lucsulmare.it) phone. 0541 338724 fax.0541 331868. It's possible anyway to download the documentation from the site, as well as modules and indications for the asylum.

## HOW TO REACH US

See general indications

## LOCATION

By the central seat

## CONTACTS

Phone. 0541 338713 – or 0541 338711 (call-center)

Fax 0541 338742



# OPERATIVE UNIT PSYCHOPHYSICAL DISABILITIES

Rehabilitation ex Art. 26 L. 833/78



## **TYPOLOGY OF THE SERVICE**

The operative unit psychophysical disabilities, located by the center of Rehabilitation Luce sul Mare, Bellaria Igea Marina (RN) is classified as Operative Unit of Rehabilitative Asylum of residential kind, for the l'ex Art. 26 L. 833/78. By now, it welcomes 65 patients, divided in 5 modules of housing along with the homogeneous user typology. (2 of which located by the "Vighi" pavilion).

## **FINALITY OF THE SERVICE**

It's finalized to the assistance and rehabilitative intervention in non acute clinic cases. In the matter of congenital pathologies focused generally in:

- psychophysical disabilities (cognitive deficits, damages of the motor ability)
- neuropsychic disabilities, (cognitive deficits and/or pervasive disturbs of the development, with possible physical damages, but not priority in the routine, compared to other aspects).

## QUALITY FINALITIES OF THE SERVICE

- guarantee a continuous improving of the activities, also through the certification as for the international normative UNI EN ISO 9001:2008;
- encourage proper recoveries for the kind of treatment (pertinence)
- guarantee promptness in the acceptance of the asylum demands.
- increase the client's satisfaction.
- improve the internal and external communication;
- increase the personal competence;
- improve the monitoring of the performances for what concerns the sanitary and charitable processes (also through the utilization of estimation scales).
- encourage the reinstatement of the patient in the family habit

## OFFERED SERVICES

- 24 hours medical assistance. The medical staff dedicated to the operative unity is present in the 24 hours; The child Neuropsychologist is present every day from Monday to Saturday. The specialists doctors (physiatrist and psychiatrist) are present in the structure and operate in the operative unit by call. The internal medical staff guarantee analysis and clinical monitoring, including all types of therapeutic intervention in order of emergency situations. The responsible doctor assures continuity to the courses of the patients.
- 24 hours nursing and basic assistance: the nursing and assistential service is guaranteed by professional nurses and healthcare workers. It's active 24 hours, with division in shifts in the different modules. The ward sister is present from Monday to Saturday from 8:0 to 14:00.
- Educational activity: It's active during the whole week depending on the organization of the modules in which the engineer of the psychiatric rehabilitation and educators are inserted with equivalent titles and conduct daily activities from Monday to Sunday from 7.00 to 21.00. The educative service has the task to follow the individualized projects, elaborated during the reunions of the staff, inserting the activity inside the shift of specific service, in collaboration with the present healthcare workers. The referent of the educators is present in the structure on Tuesday and Friday, from 8.30-14-30 and on Wednesday from 13.00 to 19.00.
- Physiotherapist: where, from the evaluation of the physiatrist, there will be cases requesting maintenance intervention or functional recovery of random deficits.
- Occupational Therapy: the service is finalized to the recovery of the possible maximum autonomy/self-sufficiency through the prescription of eventual aids correlated to the basic cases.
- Speech therapy. The services occupies of the treatment of the disturbs of the cognitive functions and the language, over the deglutition. The presence of the speech-therapist, in the different modules, is finalized to the maximum possible increase of the communicative modalities, correlated to the typology of users resulting strongly limited in the capability of verbally expressing themselves efficaciously.
- Psychomotricity: the service is finalized to both individual or group work, oriented to intervene on the corporeity of the of the users individuated for the adoption, over the possibility of supporting some autonomies.
- Horse-rehabilitation and Pet-therapy: it's a service activated after the estimation of the staff to encourage the acquisition of some sequences finalized to interrupt, with the help of the animal, some of the rigidities of behavior and encourage the socialization.
- Social Assistance: the dedicated person supports the family or eventual caregiver depending on invalidity request or social security procedures.
- Asylum office: Over the programming of the asylums, the service provides indication on how sending demand of civil invalidity, requests of services for the income, demand for the nominee of the adhesion administrator, release of long-stay certifications, requests of medical reports and copy of the clinical case history.

## PROFESSIONAL AND SCIENTIFIC COLLABORATIONS

The ward uses specific expert advices in specific sectors:

- Cardiologic evaluation
- Eye evaluation
- Pneumological evaluation

For each specific different necessity we refer to the public hospital structure

## INTER-DISCIPLINARY STAFF

- Specialist Neuropsychiatric child doctor
- Specialist psychiatric doctor
- Specialist physiatrist doctor
- Internal doctor
- Nursing Service coordinator
- Nurse
- Healthcare worker
- Physiotherapist
- Occupational therapist
- Speech-doctor
- Psychiatric rehabilitation engineer / sanitary educators
- Psychomotricist
- Social Assistance



## HOW BEGINS THE ASYLUM

The access to the ward takes place on programmed asylum proposed by the doctor/referent of the public structure of the proposing ASL. We will effect a first evaluation on the basis of the clinical relation which will be valued by our Responsible doctor for the beginning of the asylum procedures, which will include the convocation of the family of the patient. In case of positive ending, after the collection of the necessary documentation there will be the insertion in a wait list, with the tentative of giving indications about the period of eventual adoption. The contacts are taken with the Asylum office mail: [ricoveri.ig@lucsulmare.it](mailto:ricoveri.ig@lucsulmare.it) phone. 0541 338724 fax. 0541 331868. Inside the ward is present the "Guide to the Asylum" which will be given to the head-nurse at the entrance of the ward.

## HOW TO REACH US

See general indications.

## LOCATION

By the central seat

## CONTACTS

Phone. 0541 338711

Fax 0541 331868

# Operative Unit “A.Vighi” Pavilion

Rehabilitation ex Art. 26 L. 833/78



## **TYPOLGY OF THE SERVICE**

~~The Vighi pavilion offers 73 beds accredited to the ex art. 26 L. 833/78, included the two modules of the Operative Union Psychophysical disabilities located at the first floor of the structure.~~

The Operative Unit Vighi offers 54 beds accredited to the ex art. 26 L. 833/78.

## **FINALITIES OF THE SERVICE**

The service is oriented to users with civil invalidity superior to 67% (Rif.to ex art. 26 L. 833/78) who needs a period of rehabilitation to reacquire or maintain the remaining abilities.

## OFFERED SERVICES

The structure is located by the seaside and this allows to offer rehabilitation in the sea water and light-therapy, over creative moments and entertainment for all the guests.

The rehabilitative treatments are various and different:

- Neuromotor Rehabilitation;
- Psychomotricity;
- Psychological Intervention;
- Speech-therapy;
- Neuropsychology;
- Respiratory physiotherapy;
- Relaxing and downtime;
- 24 hours medical assistance. The internist doctor guarantees the evaluation, the clinical monitoring and the therapeutic interventions. The specialist physiatrist doctor is responsible of the formulation of the individual rehabilitative project which contemplates (over the recovery of the physical disabilities) also the eventual activation of other professional figures.
- 24 hours Nursing and basic assistance. The nursing staff offers rehabilitative nursing interventions and of education and assistance of the caregiver.
- Neuromotor re-education. It's aimed at the neuromuscular activation, the prevention of tertiary damages and at the improving of the breath performances.
- Occupational therapy. The service is finalized to offering the users assistance and expert device on the aids already in possess.
- Neuropathology and speech-pathology. The services occupies of the evaluation and treatment of the disturbs of the cognitive and behavior functions, the language, the deglutition, and is activated if expected by the individual rehabilitative project.
- Clinic Psychology. The service is aimed at psychologically supporting the user and its family, you can access to it for free and directly through expert device and individual or family adoption and gets activated if expected by the individual rehabilitative project.
- Social assistance. The social worker offers device on occasional problems with the services of the territory.
- Asylum office. The service, over the programming of the asylums, furnishes indications on: releasing long-stay certifications, request of medical reports, copy of the case history.

## QUALITY FINALITIES OF THE SERVICE

- guarantee a continuous improving of the activities, also through the certification as for the international normative UNI EN ISO 9001:2008;
- encourage proper recoveries for the kind of treatment (pertinence)
- guarantee promptness in the acceptance of the asylum demands.
- increase the client's satisfaction.
- improve the internal and external communication;
- increase the professional competence;
- improve the monitoring of the performances for what concerns the sanitary and charitable processes (also through the utilization of estimation scales).

## PERSONAL AND SCIENTIFIC COLLABORATIONS

- Cardiologic Evaluation
- Optometric evaluation
- Phoniatic evaluation
- Gastroenterological Evaluation
- Neurologic Evaluation
- Lung Evaluation

## INTERDISCIPLINARY STAFF

Specialist Psychiatrist Doctor  
Internist Doctor  
Nurse  
Nursing Service coordinator  
Rehabilitation techniques coordinator  
Social sanitary operator  
Physiotherapist  
Occupational Therapist  
Speech Therapist  
Speech- language pathologist  
Neuropsychologist  
Psychomotor educator  
Social Assistance



## HOW BEGINS THE ASYLUM

The access to the ward takes place on programmed asylum, previously authorized by the A.S.L. of the residence of the user, attaching the medical documentation which will be evaluated by the doctor responsible for the insertion in the wait list. The contacts for programming the access must be taken with the reservation office [vighi.lsm@lucsulmare.it](mailto:vighi.lsm@lucsulmare.it). It's possible to download the documentation, the modules and indications from the site [www.lucsulmare.it](http://www.lucsulmare.it).

## HOW TO REACH US

See general indications.

## LOCATION

By the central seat.

## CONTACTS

Phone. 0541 338755

Fax 0541 338758

# Operative Unit pavilion “Q. Sirotti”

Socio Rehabilitative Residential

Daily Center for disabled

Daily Occupational Therapy Center



## TYPOLGY OF THE SERVICE

The structure agreed upon with the USL agency of Rimini since 1993 and, since July 2011, accredited under the law DGR 514/2009 Region Emilia-Romagna, has available 52 beds and is oriented to adults (from 18 to 65) with complex disabilities. It's a socio sanitarian service finalized to person with acute physical, intellectual or multiple disability, with different grade of physical or relational non self-sufficiency, without the family support or for those who cannot live in their house anymore. In relation to the needs of the single users, and in agree with the USL Agency and/or the territorially competent Municipality, assistential or rehabilitative interventions are guaranteed:

- Intellectual disabilities Module, with behavioral disturbs
- Psychophysical and Intellectual Disabilities Module.

It's also included a nucleus for people with acquired disability.

## FINALITY OF THE SERVICE

The service is aimed at distributing services to the person with complex disabilities, in relation to the needs of the territory, the region, and of the families, encouraging the quality of life and the rights of active citizen. It takes advantage of periodical supervisions and/or staff verifications. Near to life nucleus educative activities and of social inclusion in the two educative poles are developed.

- a) Expressive arts: occupational activities, time to spare, sport, expression, social inclusion
- b) Didactical Farm: horse rehabilitation, agility dog, taking care of the animals in the farm, social projects dedicated to schools and external centers.

## TYOLOGY AND FINALITY OF THE DAILY SERVICES.

### CTO – CENTER OF OCCUPATIONAL THERAPY

The task of the service is dedicated to the implementation of projects about autonomies, cognitive, occupational and of social inclusion with the USL agency and the family of the user, inside a concept of congestion of the care and implication, oriented to persons in the territory with acquired disabilities. It's active from Monday to Friday and from 09:00 am to 03:00 pm, admitting up to 12 users.

The activity is handed by a professional educator, a health worker, an occupational therapist. It takes advantage of periodical neuropsychological supervisions and staff verifications.

#### STAFF

Coordinator of the service  
 Professional Educator  
 Occupational Therapist  
 Neuropsychologist  
 Social assistant  
 Health worker



### CSR – DAILY SOCIO-REHABILITATIVE CENTER

Daily socio-rehabilitative center for users with intellectual and behavioral disabilities, accredited under DGR 514/2009 with the social office (ufficio di piano) of the municipality of Rimini for the users residing in the Province of Rimini and region Emilia-Romagna. The center has, between its finalities, the task of guaranteeing educative paths for the maintenance and the development of autonomy, assisting interventions to support auto-sufficiency and favor the personal and social autonomy, recreational and occupational activities, for the participation to social life, particularly in the local community. It offers an alleviation support to the families who have in charge persons with acute and complex disabilities. It's a socio-sanitarium service destined to persons with acute physical, intellectual or multiple disability, with different grade of relational or physical non – auto sufficiency. It furnishes a service at up to 8 users, the actual organization contemplates two educators and a socio-sanitarium operator on the following timetable: from Monday to Friday, from 9.30 am to 5.30 pm and on Saturday: from 9.00 am to 3.00 pm. Those who have access to this service are intellectual disabled, with mental insufficiency and epilepsy, multi-sensorial disabilities, intellectual and behavioral deficits. It takes advantage of periodical psycho-educative supervisions and staff verifications.

#### STAFF

Coordinator of the Service  
 Professional Educator  
 Health-care worker  
 Social assistant



## OFFERED SERVICE CSRR-CSR-D-CTO

- 24 hours emergency medical care guaranteed by the center of rehabilitation. The dedicated medical staff is present in the days of Monday and Thursday from 9.30am to 11.30 am.
- The physiatrist Doctor is present with programmed monthly access with the objective of projecting and verify periodically in the staff the rehabilitative activities of the service.
- 24 hours assistance service, the staff is formed and prepared for the activities dedicated to the two modules, daily and weekly work plans are developed in projects dedicated to the primary and secondary ADL (activities of daily living), with periodical verifications. The work of the health-care workers is integrated with the other professional figures such as educators, nurses, rehabilitation engineers.
- Educative activities. The activities, starting from the idea of projecting life, are diversified and individualized through the individual Educative Plan – individual assistance plan for each user, in sharing and involving with the families and with the staff of the territory.



## THE EDUCATIVE ACTIVITIES PROJECTED IN THE TWO POLES.

1) Expressive Arts Pole: occupational activities, time to spare, sport, expressive, of social inclusion, psycho-educative projects, strengthening activities and on maintaining the residual abilities (relational, affective, intellectual, of socialization), formation activities and pedagogical cultural comparisons, by the Universities, work tables of the province or the region.

2) Didactical Farm: horse rehabilitation, agility dog, occupational activities dedicated to the care of the animals of the farm, social projects dedicated to schools and external centers, integration with the didactical farms of the territory, formation activities, essays dedicated to the horse rehabilitation and agility dog oriented to persons (minors and adults) with complex disability (autism, intellectual, psychophysical disturbs, behavioral disorder and social disadvantage), cultural comparisons, by the Universities, work tables of the province or the region.

- Interventions related to information new technologies labs are projected.
- Neuromotor reeducation.
- Occupational therapy. The service is finalized to the recovery of the possible maximum autonomy/auto-sufficiency in the self-care in the handling of daily domestic activities and the free time.
- Speech therapy. The service occupies of the evaluation and treatment of the disturbs of the cognitive and behavioral functions, as well as of speech and deglutition.
- Social Assistance. The service relates to the families referring to the continuity of the cure, meeting weekly with the coordinator of the structure and the families of the users. It verifies the comfort of the interested persons.
- Psychiatric device.
- Psycho-pedagogical Supervision.
- Activity of horse rehabilitation, supervised by a doctor with specialization inherent to the horse activities, oriented to children and adults with autism, social disadvantage, intellectual disturbs and psychophysical disabilities, with interventions open to the extern (schools, families, associations).
- Psycho-educative projects oriented to users with intellectual and psychophysical disabilities and behavioral disorder.
- Intermediation activities for the families with relational and social brashness, dedicated to users interested in our service.
- Projects of social inclusion for users with complex disability (intellectual disturbs, psychophysical disabilities, behavioral disorders).
- Projects of external (in the open air) dayrooms.
- Projects of co-handling of the cure on the educative and assistance level.
- Day out and returns to the families, dedicated to events and socialization.
- Projects for the development of the autonomies, for users with acquired disability, both external and internal, oriented to the social integration and valorization of the residual abilities.
- Neuropsychological Laboratory for users with acquired disability.
- Laboratories handed in collaboration with voluntary work associations, in the realization of workmanship artifacts.
- External laboratories dedicated to theater, dance and music-therapy
- Asylum office: Over the programming of the asylums, the service provides indication on how sending demand of civil invalidity, requests of services for the income/ checks for complement, demand for the nominee of the adhesion administrator, demand for injury checks (INAIL), release of long-stay certifications, requests of medical reports and copy of the clinical case history.

## QUALITY FINALITIES OF THE SERVICE

- guarantee a continuous improving of the activities, also through the certification as for the international normative UNI EN ISO 9001:2008;
- encourage proper recoveries for the kind of treatment (pertinence)
- guarantee promptness in the acceptance of the asylum demands.
- increase the client's satisfaction.
- improve the internal and external communication;
- increase the personal competence;
- improve the monitoring of the performances for what concerns the sanitary and charitable processes (also through the utilization of estimation scales).
- Sharing and participation with the projects with the families (meetings) .
- Improvement of the ADL (activities of daily living) both primary and secondary, of the users (evaluating the reach of the objectives reported in the educative individual plans, and in the assistance individual plans).
- Realization of projects of social inclusion.

## PROFESSIONAL AND SCIENTIFIC COLLABORATIONS

The CSRR/CSR/CTO takes advantage of specific devices in the sectors of pedagogy and rehabilitation. They are:

- Psychology University of Cesena, device in special psycho-pedagogy.
- Horse Rehabilitation.
- Collaboration with local and regional authorities about the theme of disability, promotion of comfort, interventions and approaches to encourage the social integration.
- Scientific collaborations product for activities in congresses and seminars about the sector.
- Collaboration with the Central Movement Hobart Method.
- Collaboration with the social Theater Alcantara.
- Collaborations with voluntaries and associations AVULSS.

## INTERDISCIPLINARY CSRR STAFF

Coordinator of the structure  
Specialist Psychiatrist Doctor  
Internist Doctor  
Psychiatrist Doctor  
Sanitary activity responsible  
Assistance activity responsible  
Professional Educator  
Professional Nurse  
Health worker  
Physiotherapist  
Occupational Therapist  
Neuropsychologist  
Speech-therapist  
Social Assistant  
Psychomotricist



## HOW BEGINS THE ASYLUM

The access begins by a call from the user for a visit, together with the staff of the inviting socio-sanitary district and the presence of the coordinator and the staff of the CSRR. Then the evaluation by the UVM (multidisciplinary evaluation unit) will follow. The asylum, once accorded with the inviting district, will be inserted in a wait list. The contacts for programming the access must be taken by the asylum office mail [ricoveri.ig@lucsulmare.it](mailto:ricoveri.ig@lucsulmare.it) phone. 0541 338724 fax. 0541 331868. Inside the ward will be present the "guide to the asylum" which will be given at the entrance by the RAS (sanitary activities responsible).

## HOW TO REACH US

See general indications

## LOCATION

By the central seat

## CONTACTS

Phone. 0541 - 338734 Coordinator of the structure;  
0541 338711 Call center  
Fax 0541 – 331868

# Group Practice and Outpatient's rehabilitation Center "Igea Marina"



## TYOLOGY OF THE SERVICE

The Group practice is classified also like rehabilitation clinic center, accredited with the SSR, has therefore a rehabilitative team for the global charging of the user through the projection of rehabilitative paths.

## THE GROUP PRACTICE

It's oriented to persons with transitory minimal disability like: results of muscle-skeletal traumas, fractures or recent surgical operations. Moreover the service is oriented to persons with potentially chronic pathologies such as dysmorphic feature of the rachis in the evolutionary or adult age, osteo-articulation degenerative diseases, sub-acute or chronic neurological pathologies. The service wants to answer to the quality request in the range of the rehabilitation and neurologic , orthopedic or traumatological physiotherapy, it reunites different medical and rehabilitative specializations to conduct the person from the diagnosis to the complete functional recover.

## OUTPATIENT'S REHABILITATION CENTER

It's oriented to persons with complex disability like neurological pathologies who necessitate of a take in charge by a multidisciplinary staff in accordance to a rehabilitative project shared and finalized to the reaching of specific objectives. It's aimed to promote the personal autonomy and improving the quality of life of the disabled person and of his family, so it furnishes rehabilitative performances accorded and integrated with the territorial services; the operative modalities are founded on our conviction that each disabled person is protagonist of its own rehabilitative path, in which the operator has the role of competent guide in the research of the best psycho-physical and social conditions reachable in that moment; the path is characterized through a clarification of the rehabilitative objectives shared with the user and/or its family, and a punctual evaluation of them.

The objectives of the Group practice and Group practice center of rehabilitation "Igea Marina" are identifiable as the followings: satisfy the claim of the users in respect of the typologies required, in collaboration with the ASL for what concern the pre-established performances commissioned to us.

### Average times of attendance

Pre-established specialistic visits	by 18 business days*
Specialistic visits with fee	by 3 business days
Priority Pre-established rehabilitative performances	by 7 business days
Ordinary Pre-established rehabilitative performances	by 90 business days*
Rehabilitative performances with fee	by 3 business days

\* The wait times may vary on the basis of the annual commission amount.

## QUALITY FINALITIES OF THE SERVICE

- guarantee a continuous improving of the activities, also through the certification as for the international normative UNI EN ISO 9001:2008;
- guarantee promptness in the acceptance of the intervention demands.
- increase the client's satisfaction.
- improve the internal and external communication;
- increase the personal competence;
- improve the monitoring of the performances for what concerns the sanitary and charitable processes (also through the utilization of estimation scales).
- respect of the accorded timetable of the performances.

## OFFERED SERVICES

### Medical Area

Physiatric specialized visits  
Painkilling Acupuncture  
Seepage therapies

### Pediatric Area

Neuromotor Reeducation  
Psychomotricity  
Speech-therapy  
Horse rehabilitation  
Pet-therapy

### Rehabilitative Area

Functional reeducation  
(mobilization, functional recovery)

Kinesio taping  
Manual therapy by Kaltenborn method  
Manual therapy by Maitland method  
Fascia Manipulation by Stecco method  
Mobilization of the nervous system by Butler  
Neuromotor reeducation  
Neuromotor reeducation by Bobath method  
Breath reeducation  
Vestibule reeducation  
ATM reeducation  
Postural reeducation by Mezière method  
Scoliosis reeducation (individual or on group)  
Group Postural reeducation for adults  
Manual lymphatic drainage  
Electrotherapy  
Laser-therapy  
Magnet-therapy  
Ultrasounds  
Occupational therapy  
Speech therapy  
Neuropsychological evaluation  
Psychological evaluation

## INTERDISCIPLINARY STAFF

Specialist physiatrist doctor  
Physiotherapist  
Occupational therapist  
Neuropsychologist  
Speech-pathologist  
Psychologist

Professional educator  
Therapist for the neuro-psychomotricity of the evolutive age  
Social assistant  
Nurse  
Health-care worker

## HOW TO ACCESS

The reservation of all of the performances can be effectuated from 07.45 am to 7.30 pm by the front office of the group practice, in person or by phoning. The clients can access to the specialist visits (in agreement) by reservation at the CUP window after holding the medical request filled in all its parts, included eventual exemption certifications. All the performances given by the group service are bookable even privately by the patient after medical prescription (even in simple card). At the moment of the access the patient must show up at the front office and present the medial request paying the due, (ticket or private charge). The payments must be effected cash (in the limits established by the law), with bancomat and credit card or bank check. The user is asked to inform in case of delay in the time accorded to verify the possibility of a repositioning, not to be charged of the due for the programmed performances. The cancellation of the meeting can be effectuated by phone or by fax at the numbers of the center during the timetable of the secretaryship.

## TIMETABLE OF OPENING

From Monday to Friday, from 8.00 am to 7.00 pm.

## HOW TO REACH US

See general indications

## LOCATION

By the central seat

## CONTACTS

Phone. 0541 338711  
Fax 0541 338742

# Domiciliary Rehabilitative Activity



## **TYPOLOGY OF THE SERVICE**

The Domiciliary Rehabilitation Activity is effectuated in agreement with the SSR (regional sanitary service) and on the basis of the specific commission of the AUSL of Romagna (ex AUSL of Rimini) for the districts of Rimini and Riccione.

## **FINALITIES OF THE SERVICE**

The service is oriented to users with recent results of traumas and/or prosthesis of the hip and knee in demission from the wards of orthopedics and hospitals on the territory. Moreover we effect treatments to users with acute chronic disability of neurological and/or degenerative kind.

### **Average times of wait**

Acute orthopedics users by 3 business days from the demission  
Users with chronic pathologies by 60 business days\*

\* The times of wait may vary on the basis of annual commission amount

## OFFERED SERVICES

The service, under commission of the AUSL, gives the following performances:

Specialized domiciliary psychiatric visit  
 Domiciliary motor and functional Reeducation

The performances are offered from Monday to Friday in both the morning and the afternoon, adapting to the exigencies of the user

## QUALITY FINALITIES OF THE SERVICE

- guarantee the continuous improving of its own activities;
- guarantee promptness in the acceptance of the intervention demands.
- increase the client's satisfaction.
- improve the internal and external communication;
- increase the personal competence;
- improve the monitoring of the performances of the rehabilitative processes (also through the utilization of estimation scales).
- respect of the accorded timetable of the performances.

## INTERDISCIPLINARY STAFF

Specialist Psychiatrist Doctor  
 Physiotherapist



## HOW TO ACCESS

To obtain the prescription for the treatment, the user has to go to its own general doctor to request the "specialized domiciliary psychiatric visit". The request must be authorized from the service of rehabilitative and prosthesis assistance of the Ex Ausl of Rimini. For what concerns the patients coming from the ward of orthopedics of the territory hospitals, the requests are already authorized during the long stay in the hospital by the psychiatrist of the ex AUSL of Rimini

## LOCATION

By the central seat

## CONTACTS

phone. 0541 338711  
 phone 0541 338737



# Center of Mobility FIAT AUTONOMY “Luce sul Mare”



## **TYPOLOGY OF THE SERVICE**

The Center of mobility was born from the collaboration between the social Coop. Luce sul Mare, the A.U.S.L. of Rimini Adult handicap sector and FIAT car-project autonomy. The service is oriented to all those who present a reduction of the motor and/or cognitive-behavioral abilities:

- of traumatic nature, as a result of cranial trauma, spinal cord injury or amputations.
- of vascular nature, as a result of cerebral stroke, ischemic or hemorrhagic.
- of degenerative nature, as from pathologies such as dystrophy, multiple sclerosis, rheumatoid arthritis.
- of congenital nature, as a result of child cerebra paralysis.

Moreover, we also make evaluations for users in advanced age of their abilities necessary for driving a car in security.

## **FINALITY OF THE SERVICE**

The service is finalized to simplify the path for the achievement of the special driver's license (B) to support the mobility and social integration of the user.

## Offered services

Colloquial finalized at:

- providing information concerning the service.
- providing information concerning the facilitations and related to the special driver's license (B):
- Medical commission to obtain the suitability for the achievement of the license, civil department for motor vehicles and driving school to face the theoretical exam (in case of first driving license achievement), and the practical and modality one (assembler and automotive) for a contingent adaptation of the user's car.
- collect information related to the motivations, the resources, and the critical aspects of the user.
- Instrumental evaluation through the residual abilities evaluator (v.c.r.) which permits to test the abilities necessary to return at the driving in security.
- evaluation in ecologic contest through drive texting thanks to the collaboration of specialized driving instructors and through the utilize of vehicles on which aids are installed to facilitate the driving.
- elaboration of a report with description of the results of the various texts.

## PROFESSIONAL AND SCIENTIFIC COLLABORATIONS

The service collaborates with:

- medical local commission of Rimini
- Civil department for motor vehicles
- Driving school Fabbrini of Rimini, and Ugolini of Bellaria Igea-Marina.

## INTERDISCIPLINARY STAFF

Physiotherapist  
Neuropsychologist  
Occupational therapist



## HOW TO ACCESS THE SERVICE

The access to the service comes through phone or through e-mail from the user; the name will be inserted in the wait list and, after the access programming, the user will be contacted by the operators of the service for communicating the date and time of the meeting.

## HOW TO REACH US

See general indications

## LOCATION

By the central seat

## CONTACTS

Phone 0541 338711 – Phone 0541 620980 int. 4  
Fax 0541 331868  
E-mail: [patenti.lsm@lucsulmare.it](mailto:patenti.lsm@lucsulmare.it)

# Operative Unit Ward of Neurorehabilitation and Intensive Rehabilitation



## **TYOLOGY OF THE OPERATIVE UNIT**

The operative unit of intensive rehabilitation is located in the civil hospital “A. franchini” of Santarcangelo di Romagna (RN), and it’s classified as operative unit of neurorehabilitation and intensive rehabilitation. It has 30 beds available, 3 of which dedicated to the Day-hospital (out-patients’ beds).

## **FINALITIES OF THE OPERATIVE UNIT**

It’s oriented to the assistance and recovery of functional disablements and disabilities, (ministerial codes 56 and 75), of different nature and acuteness, who necessitates a medical cure and 24 hours nurse assistance, and also of evaluation interventions and intensive therapeutics. The operative Unit is accredited for the welcome of persons affected by results of acute acquired brain damage of traumatic origin (or other), characterized by the insurgence of a state of coma (more or less protracted), which necessitates of rehabilitative projects and programs of high rehabilitative specialization.

## OFFERED SERVICES

- 24 hours Medical assistance. The medical personnel of the operative unit is present from 8.00 am to 20.00 pm and from Monday to Friday, on Saturday from 8.00 am to 14.00 pm. In the remaining hours and in non-working days is guaranteed the presence of the hospital emergency medical care. The specialist physiatrist doctor is responsible of the individual rehabilitative project.
- 24 hours nurse assistance. The personnel elaborates and perform the individual rehabilitative nurse program, and the caregivers evaluation and education program.. the program of neuromotor reeducation, done by the physiotherapist, is oriented to the functional recover of the movement and act, to the prevention of the damages of the immobilization, to the improving of the breath performances and at the reaching of the possible maximum functionality.
- Occupational therapy. The service is finalized to the recovery of the maximum autonomy in the self care, in the conducting of the everyday life activities, and participation. The evaluation and prescription of the necessary aids will be made.
- Neuropsychology and speech-pathology. The service occupies of the evaluation and treatment of the disturbs of the cognitive and behavioral functions, as well as the speech and deglutition.
- Clinical psychology. The service is oriented to the psychological support of the user and its family. The family has access to it after a contract with the expert for the device and individual take in charge (or with the family).
- social assistance. The social assistance proposes the solution to problems inherent the demission, with the activation of the territory services, to guarantee therapeutic continuity to the demission. The service provide indications on the presentation of the invalidity demand and on social security procedures.
- Asylum office: Over the programming of the asylums, the service provides indication on how sending demand of civil invalidity, requests of services for the income, demand for the nominee of the adhesion administrator, INAIL injury demand, release of long-stay certifications, requests of medical reports and copy of the clinical case history.
- Rehabilitative Day-hospital. The access to the day-hospital is established or in continuity with the ordinary long-stay, or from another sanitary structure. This modality of asylum is proposed when the pathology and the clinical conditions permit a daily assistance and sanitary performances in programmed times. The users who access at the day hospital can get all the diagnosis and rehabilitative services of the structure.
- Accord with the congregation of Franciscan Nuns of the convent of Santarcangelo di Romagna (RN), for the utilize of the accommodations as guestrooms for the families of the non-resident users, with the application of accorder prizes.

## QUALITY FINALITIES OF THE SERVICE

- guarantee a continuous improving of the activities, also through the certification as for the international normative UNI EN ISO 9001:2008;
- encourage proper recoveries for the kind of treatment (pertinence)
- guarantee promptness in the acceptance of the asylum demands.
- increase the client's satisfaction.
- improve the internal and external communication;
- increase the personal competence;
- improve the monitoring of the performances for what concerns the sanitary and charitable processes (also through the utilization of estimation scales).
- prevent bed sores.

## INTERDISCIPLINARY STAFF

Specialist physiatrist doctor  
Internist doctor  
Nursing service coordinator  
Rehabilitation engineer coordinator  
Nurse  
Healthcare worker  
Physiotherapist  
Occupational therapist  
Neuropsychologist  
Speech-therapist  
Clinical psychologist  
Social assistant



## PROFESSIONAL AND SCIENTIFIC COLLABORATIONS

The ward avail itself of specific expert device in advanced sectors of the rehabilitation such as:

- evaluation of functional surgery of superior and inferior limb.
- advanced treatment of the spasticity.
- advanced treatment of the bladder disturbs (detrusor botulinus toxin, urodynamic study).
- neuro-surgical evaluation.
- cardiologic evaluation.
- ophthalmic evaluation.
- phoniatic evaluation.
- neurological evaluation.
- treatment with shock wave for the heterotopic calcifications.
- lung evaluation.

## HOW BEGINS THE ASYLUM

The access to the ward begins through programmed asylum proposed by the doctor of the hospital ward, by the public specialist or by the general medicine doctor, after prescription done on the SSN module, attaching a clinical-physiatric report which will be evaluated by our responsible doctor for the inserting in the wait list. The contacts for programming the access must be taken with the asylum office: Fax 0541 620727  
mail: [ricoveri.sa@lucsulmare.it](mailto:ricoveri.sa@lucsulmare.it) Inside the ward there will be the "guide to the asylum" which will be given to the head nurse at the entrance of the ward.

## HOW TO REACH US

The o.u. of neuro-rehabilitation and intensive rehabilitation is located at the 2nd floor of the civil hospital "A. Franchini" of Santarcangelo di Romagna (RN). You can reach it by travelling the highway A14 till the toll-booth Rimini nord. You have to go on towards Santarcangelo

di Romagna and soon after the roundabout at the entrance of the city you take the turn on your left on Via Pedrignone (street) where is located the civil hospital "A. Franchini." For those who come by train it's possible to stop at the station of Rimini from where autobus start (line 9). Those who arrive at the station of Santarcangelo have the possibility of reaching the hospital by foot in 10 minutes, or utilize the public transports.

## LOCATION

Via Pedrignone, 3  
47822 Santarcangelo di Romagna (RN)

## CONTACTS

phone. 0541 620980 ( int. 2)  
fax 0541 625841 Caposala.  
Phone and Fax 0541 620727 Asylum office

# Group Practice and Outpatient's rehabilitation Center “Malatesta”



## **TYOLOGY OF THE SERVICE**

The group practice, located in the center of Rimini, is classified also as Group Center rehabilitation center, accredited with the S.S.R., so it has e rehabilitative team for the global take in charge of the user through the projection of the rehabilitative paths.

## THE GROUP PRACTICE

It's oriented to persons with transitory minimal disability like: results of muscle-skeletal traumas, fractures or recent surgical operations. Moreover the service is oriented to persons with potentially chronic pathologies such as dysmorphic feature of the rachis in the evolutionary or adult age, osteo-articulation degenerative diseases, sub-acute or chronic neurological pathologies. The service wants to answer to the quality request in the range of the rehabilitation and neurologic , orthopedic or traumatological physiotherapy, it reunites different medical and rehabilitative specializations to conduct the person from the diagnosis to the complete functional recover.

## OUTPATIENT'S REHABILITATION CENTER

It's oriented to persons with complex disability like neurological pathologies who necessitate of a take in charge by a multidisciplinary staff in accordance to a rehabilitative project shared and finalized to the reaching of specific objectives. It's aimed to promote the personal autonomy and improving the quality of life of the disabled person and of his family, so it furnishes rehabilitative performances accorded and integrated with the territorial services; the operative modalities are founded on our conviction that each disabled person is protagonist of its own rehabilitative path, in which the operator has the role of competent guide in the research of the best psycho-physical and social conditions reachable in that moment; the path is characterized through a clarification of the rehabilitative objectives shared with the user and/or its family, and a punctual evaluation of them.

The objectives of the Group practice and Group practice center of rehabilitation "Malatesta" are identifiable as the followings: satisfy the claim of the users in respect of the typologies required, in collaboration with the ASL for what concern the pre-established performances commissioned to us.

### Average times of attendance

Pre-established specialistic visits	by 18 business days*
Specialistic visits with fee	by 3 business days
Priority Pre-established rehabilitative performances	by 7 business days
Ordinary Pre-established rehabilitative performances	by 90 business days*
Rehabilitative performances with fee	by 3 business days

\* The wait times may vary on the basis of the annual commission amount.

## QUALITY FINALITIES OF THE SERVICE

- guarantee a continuous improving of the activities, also through the certification as for the international normative UNI EN ISO 9001:2008;
- guarantee promptness in the acceptance of the intervention demands.
- increase the client's satisfaction.
- improve the internal and external communication;
- increase the personal competence;
- improve the monitoring of the performances for what concerns the sanitary and charitable processes (also through the utilization of estimation scales).
- respect of the accorded timetable of the performances.



## OFFERED SERVICES

### Medical Area

Physiatric specialized visits  
Specialized orthopedic visits  
Otolaryngologic visits  
Cardiologic visits  
Specialized combined visits for perineum pathologies  
Painkilling Acupuncture  
Seepage therapies  
Specialized visits for general medicine (homeopathy and homotoxicology)  
Specialized angiology visits

### Diagnosis and Therapeutic performances

Electrocardiogram  
Ecocardiogram  
Ultrasound  
Eco-color-doppler  
Wave Sound treatment

### Rehabilitative Area

Functional reeducation (mobilization, functional recovery)  
Kinesio taping  
Manual therapy by Kaltenborn method  
Manual therapy by Maitland method  
Fascia Manipulation by Stecco method  
Mobilization of the nervous system by Butler  
Neuromotor reeducation  
Neuromotor reeducation by Bobath method  
Breath reeducation  
ATM reeducation  
Postural reeducation by Mezière method  
Craniosacral postural reeducation  
Postural reeducation method "body and conscience"  
Scoliosis reeducation

(individual or on group)  
Group Postural reeducation for adults  
Lymphatic drainage  
Laser-therapy Co2  
Laser-therapy YAG  
TECARtherapy  
Magnet-therapy  
Ultrasounds  
Electrotherapy  
Occupational therapy  
Speech therapy  
Neuropsychological evaluation  
Psychological evaluation

### Altre specialità:

Psychotherapy  
Terapia

## INTERDISCIPLINARY STAFF

Specialist physiatrist doctor  
Nurse  
Physiotherapist  
Occupational therapist

Neuropsychologist  
Speech-pathologist  
Psychologist  
Social assistant  
Professional educator

## HOW TO ACCESS

The reservation of all of the performances can be effectuated from 08.30 am to 7.45 pm by the front office of the group practice, in person or by phoning. The clients can access to the specialist visits (in agreement) by reservation at the CUP window after holding the medical request filled in all its parts, included eventual exemption certifications. All the performances given by the group service are bookable even privately by the patient after medical prescription (even in simple card). At the moment of the access the patient must show up at the front office and present the medial request paying the due, (ticket or private charge). The payments must be effected cash (in the limits established by the law), with bancomat and credit card or bank check. The user is asked to inform in case of delay in the time accorded to verify the possibility of a repositioning, not to be charged of the due for the programmed performances. The cancellation of the meeting can be effectuated by phone or by fax at the numbers of the center during the timetable of the secretaryship

## TIMETABLE OF OPENING

From Monday to Friday and from 8.00 am to 8.00 pm.

## HOW TO REACH US

The group practice is located in the very town center of Rimini. You can reach it:

- by car – Highway A14: exit at the toll booth of Rimini Sud, keeping the left and then take the SS16, Nord direction, after 2,5 km exit before the overpass and then turn on your right on Via Marechiese (street), go on straight for 1,5 km, then keep the left and go on for 500 m. till the parking in Malatesta Square, turn on your left (leaving the theater "Galli" on your left, and then after 200 m turn again on your left in via A. di Duccio street number 8.

- by train – from the station of Rimini it's possible to reach the group practice by foot in about 10 minutes. Leaving behind the station take the turn on your left and at the traffic light take the turn on your left in Via Giovanni XXIII street, go on always straight ahead for about 700 m, then turn on your right for via A. di Duccio street.

## LOCATION

Via A. Di Duccio (street) numer 8, 47921 – RIMINI

## CONTACTS

Phone. 0541 782751 - Fax 0541 781489  
malatesta@lucsulmare.it



## MECHANISM OF TUTELAGE AND VERIFICATION

The management of the cooperative Luce sul mare:

- receives the observations, oppositions and complaints presented in any form by the single users, by Associations or recognized organisms who represents them.
- provides answers about the signals and complaints coming.
- verifies the commitments, adjusts and organizes, verifying annually the improving of the quality of the services.
- adopts the actions to correct and improve the performances, localize the indicators of the monitoring system and provides for the certification of the quality system.
- verifies the validity and efficacy in time, of the handling system.

The costumer can contribute at the improving of the performances and the crossing of eventual problems and disruptions also through the compilation of a questionnaire and/or the presentation of signals and complaints at the public relations office (URP).

The service URP can be reached through:

- Telephone signal not anonymously (phone 0541 338708) to which follows formalization in case of complaint.
- Written signal through FAX or web mail, ((Fax 0541 331868 - E-Mail: info.lsm@lucsulmare.it)
- signal of the costumer on apposite modules available at the URP or by the distribution points present in the seats of the services.
- direct colloquial with the URP addicted, through meeting to reserve by phone by the user at the above mentioned number.

The management undertakes itself on giving proper answer to the costumer by 30 days from the date of complaint. Whenever the inquiry could not be completed in the established times, the URP addicted communicates to the costumer the reason of the delay and a preview about the conclusion, before the 30 days stroke. The examination of the collected signals represents a sort of carburetion for our company, indispensable to put in motion actions of improvement which start from the survey of the perceived quantity of users.

## ACCESS TO THE SANITARY DOCUMENTATION

The users can ask for the information about the sanitary documentation (case history, diagnosis evidence, etc...) by the Asylum office (phone. 0541 338724 - fax 0541 331868 - mail : ricoveri.ig@lucsulmare.it) the duplicate of the case history is delivered after 30 days from the request and can be retired by the user, or by the person delegated by him in writing, equipped of a copy of the request module, or if demanded the documentation can be sent at the declared address, with shipping charged to the beneficiary. The delegated will have to exhibit, over his identity card, the following documents: mandate in written, subscribed by the titular of the case history and attached a copy of the identity card.

## INFO

In the inside of every Operative Unit and service the “guide to the asylum” will be present and (or the “catalogue of the performances” with the details of the behavior of the staff of the U.O. e/o of the service.



**Luce sul Mare**  
ONLUS

**Companionship “Luce sul Mare” Social Coop Society a.r.l. Onlus**

Address: Viale Pinzon 312/314 - 47814 Bellaria-Igea Marina (RN)

Phone. 0541.338711 - Fax 0541.331868

e-mail: [amministrazione.lsm@lucsulmare.it](mailto:amministrazione.lsm@lucsulmare.it) web-site: [www.lucsulmare.it](http://www.lucsulmare.it)



Luce sul Mare Onlus